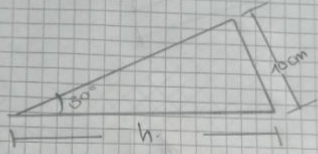


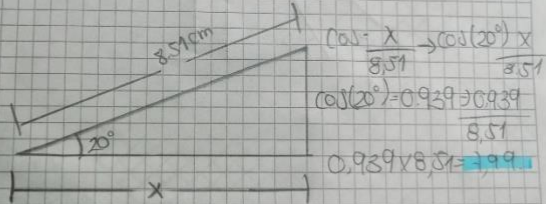
# TRIGONOMETRIA

4. ¿Cuál es el valor de la hipotenusa?



$$\cos(30^\circ) = 0.86 \quad \frac{C.O = 10 \text{ cm}}{\cos 30^\circ} = 11.6$$

2.

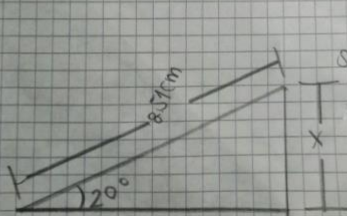


$$\cos = \frac{x}{8.51} \rightarrow \cos(20^\circ) \times 8.51$$

$$\cos(20^\circ) = 0.939 \rightarrow 0.939 \times 8.51$$

$$0.939 \times 8.51 = 7.99$$

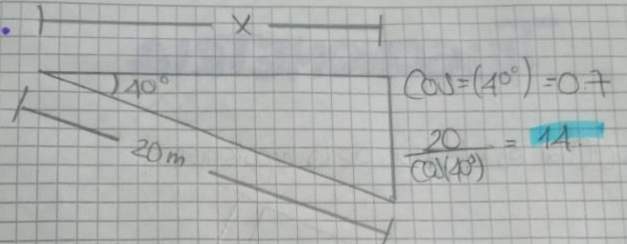
3.



$$\sin(20^\circ) = 0.34$$

$$8.51 \times 0.34 = 2.91$$

4.



$$\cos(40^\circ) = 0.7$$

$$\frac{20}{\cos(40^\circ)} = 14$$

5.

