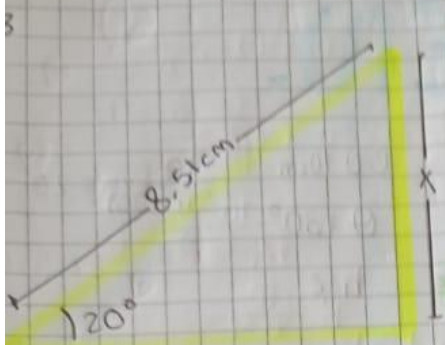


Scribe

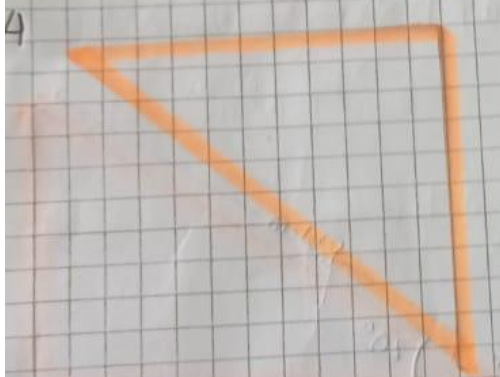


$$\text{Sen } \theta = \frac{c.o}{h}$$

$$h = 8,51 \text{ cm}$$

$$8,51 \text{ cm} \times \text{Sen } 20 =$$

$$x = 2,91 \text{ cm}$$



$$\text{Cos } \theta = \frac{c.a}{h}$$

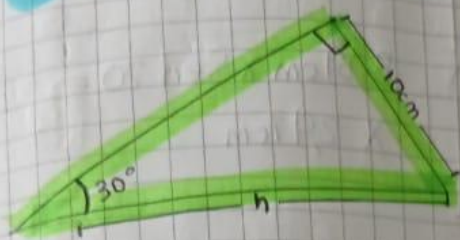
$$\text{Cos}(40) = \frac{x}{20 \text{ m}}$$

$$20 \times \text{Cos}(40^\circ) =$$

$$x = 15,32 \text{ m}$$

EXAMEN.

1



$$c = 10 \text{ cm}$$

$$\theta = 30^\circ$$

$$h = ?$$

$$\frac{10}{\sin(30)} = 20$$

$$2 \cos \theta = \frac{c}{h}$$

$$\cos(20)$$

$$= 0,939$$

$$h = 8,51$$

$$8,51 \times \cos(20) =$$

$$x = 7,99 \text{ cm}$$

