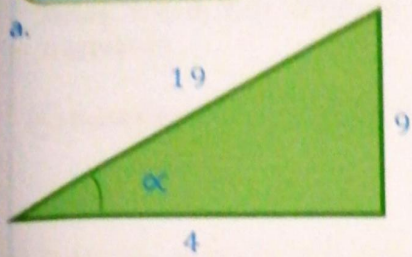




1 Hallar las razones trigonométricas.



$$\text{Sen } \alpha = 0.4071$$

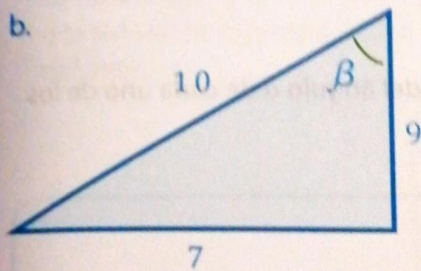
$$\text{Csc } \alpha = 0.4071$$

$$\text{Cos } \alpha = 0.7071$$

$$\text{Sec } \alpha = 0.7071$$

$$\text{Tan } \alpha = 1$$

$$\text{Cot } \alpha = 1$$



$$\text{Sen } \beta =$$

$$\text{Csc } \beta =$$

$$\text{Cos } \beta =$$

$$\text{Sec } \beta =$$

$$\text{Tan } \beta =$$

$$\text{Cot } \beta =$$

1 Realizar las siguientes operaciones.

a) $\text{Cot } 30^\circ + \text{Tan } 30^\circ$

$$1.4433$$

c) $\text{Sen } 30^\circ + \text{Cos } 30^\circ$

$$1.366$$

e) $\text{Cot } 60^\circ + \text{Csc } 60^\circ$

$$2.598$$

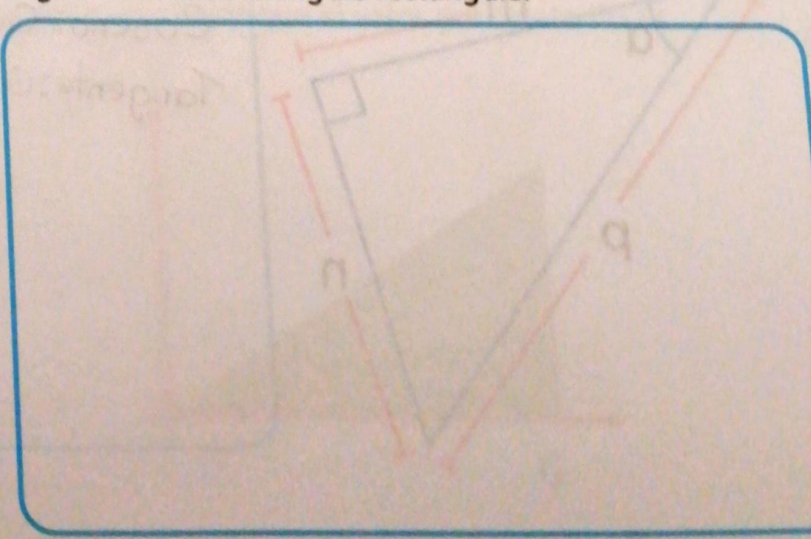
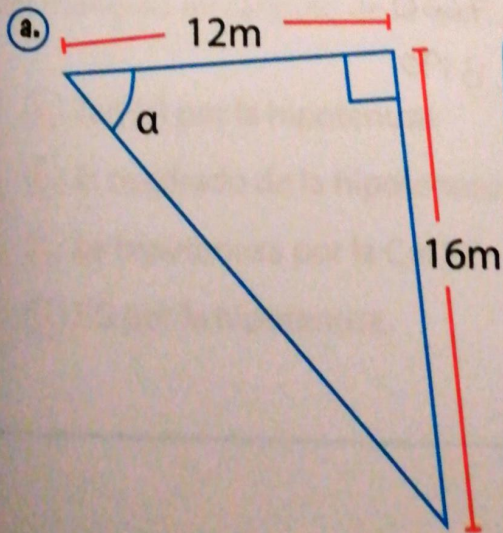
b) $\text{Sec } 30^\circ - \text{Cot } 60^\circ$

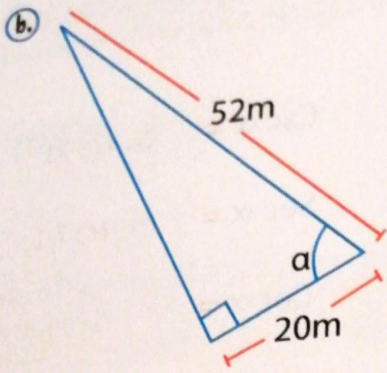
$$-0.866$$

d) $\text{Cos } 60^\circ + \text{Tan } 45^\circ$

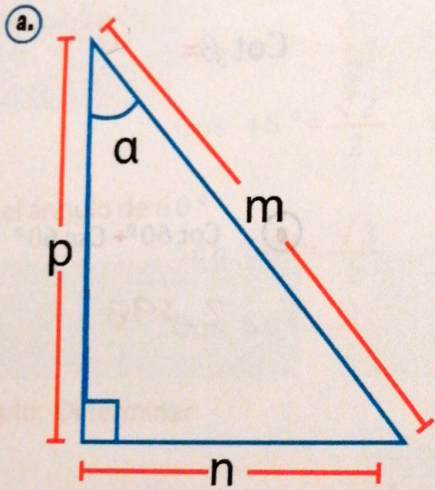
$$1.5$$

2 Halla las razones trigonométricas del ángulo α en cada triángulo rectángulo.

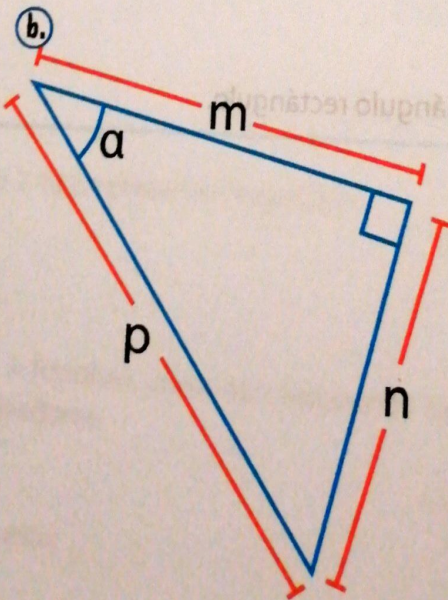




3 Escribe, en función de m, n y p, el seno, el coseno y la tangente del ángulo α de cada uno de los triángulos rectángulos que se muestran a continuación.



Senó: 0.7071
 Coseno: 0.7071
 Tangente: 1



Senó: 0.6427
 Coseno: 0.7660
 Tangente: 0.8390