

MODAL VERBS



1 In pairs, choose the correct word for each sentence and then write them down in your notebook. Discuss your options with other classmates.

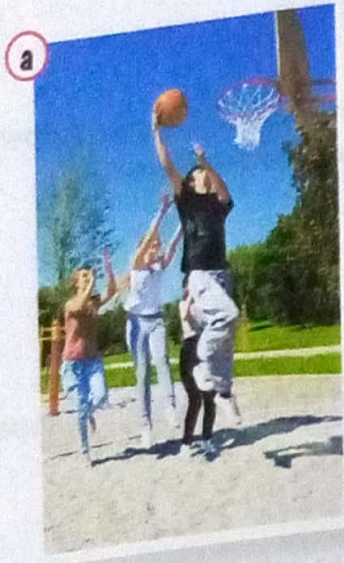
have to - can - shouldn't - could - must

- a You shouldn't go there alone. It's really dangerous and something could happen to you.
- b I must go to bed now. If I don't, I will not be able to get eight hours of sleep!
- c If you want to stop being so lazy, there are many things you have to can do. Why don't you look on the internet for some fun and healthy habits?
- d If you see trash on the floor, you have to pick it up and put it in the garbage.
- e Students in Chile must wear a uniform to go to school.
- f When you are finished with your homework and other responsibilities, you _____ go running to get some exercise every day.

2 Listen to your teacher and write the word you hear.

- a You should talk to your parents about it.
- b You could get upset.
- c You must find other things to do.
- d What can I do?
- e You have to stay at home all day.
- f You should come to drama club with me.

3 Read the situations quickly and match them with the pictures. What are the teens doing?



Two people from my class always make fun of me because I always wear a cycle helmet when I'm cycling to school. The roads are quite busy so I think it's safer to always wear a helmet. I want to be safe, but they say it looks stupid. Normally I don't care what they say, but sometimes it hurts when they are mean.

b b

Rachel, 14

I have a group of five really good friends. But my friend Diana is really annoying. She always criticises one of us – what we wear, what we say, what we're having for lunch – everything. Sometimes I talk to her about it, and she always apologises, but then she starts doing it again.

b c

Aleja, 15

I usually hang around with my friends Max and Larry at break – we all love basketball. But now they smoke. They have a group of new friends who go to get cigarettes at break and smoke them behind the gym. We hardly ever play basketball now, and I feel like I'm losing my friends. Maybe I should start smoking too?

c a

Jack, 14

4 Read the advice. Match the sentences with Rachel, Aleja and Jack.

- a You should find some new friends who enjoy your hobby. Jack
- b You shouldn't be friends with someone who is always criticising you. Aleja
- c You could ask your friends and other classmates to wear one too. Rachel
- d You should ask her why she always criticises her friends. Aleja
- e You shouldn't worry what other people say about you. Rachel
- f You shouldn't do things that are bad for your health. Jack

5 Look again at the modal verbs in exercise 4. Which verb do we use to:

- a give a suggestion? should
- b give advice and tell someone to do something? could
- c give advice and tell someone NOT to do something? shouldn't

6 Read the situations on previous page again and complete the table.

	Rachel	Aleja	Jack
1. What is the problem?	the problem is that they criticize her for wearing helmet	her friend Diana is very annoying	All his friends are drifting away
2. What is your idea to solve the problem?	Go a route where they don't go or take off that helmet when they get to school	tell friend that you change her you will no longer make friends	find other friends