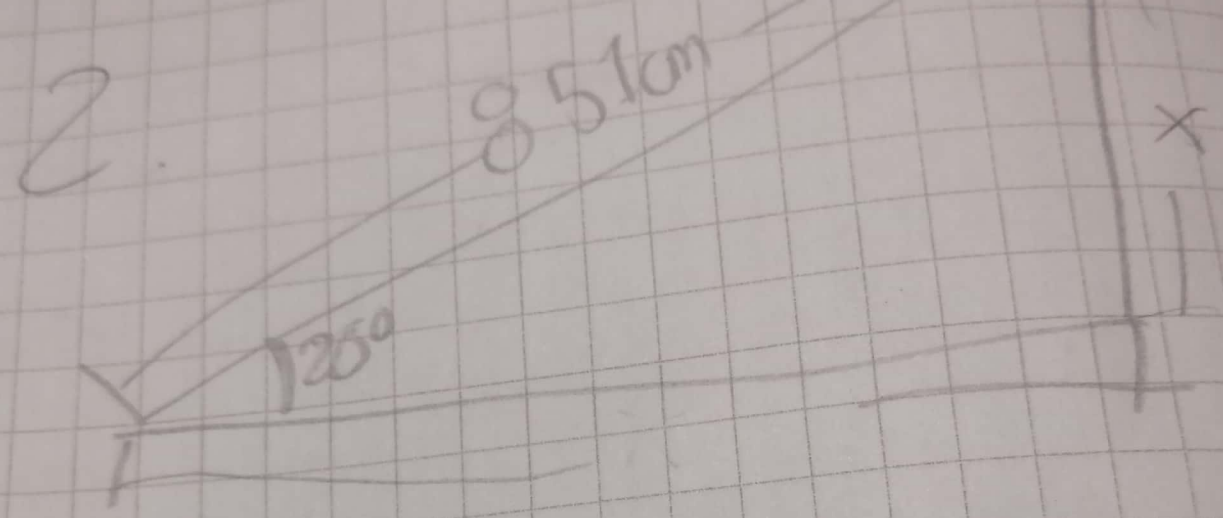


$\cos(30) = \frac{10}{h}$
 $\cos(30) = 0,86$
 $\frac{10}{\cos(30)} = 11,62$



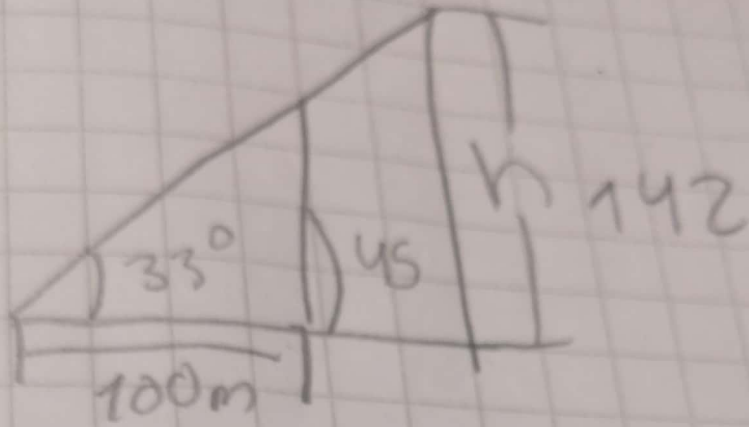
$\cos(20) = 0,93$
 $x = \frac{8,51}{0,93} = 9,150$

$\cos(40) 0,76 = 26,31$

$\sin(40) 0,64 = 31,25$

$\tan(40) 0,83 = 24,09$

5



$$\begin{aligned} C.O &= 100 \\ C.A &= A \\ \theta &= 45 \end{aligned}$$

$$\cos(45) = \frac{100}{0,70} = 142$$

$$\cos(33) = \frac{100}{0,83} = 120$$