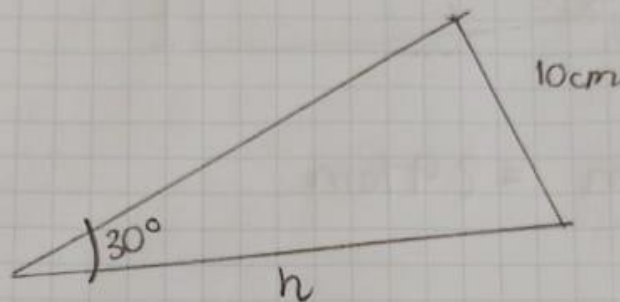


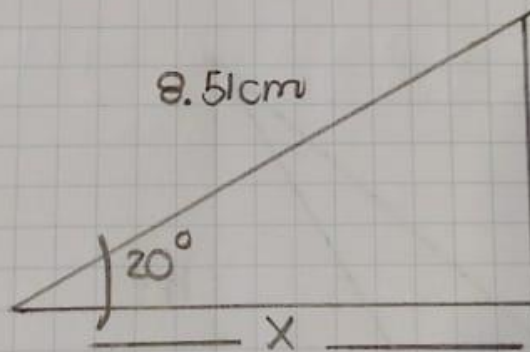
## Operaciones Evaluación

①



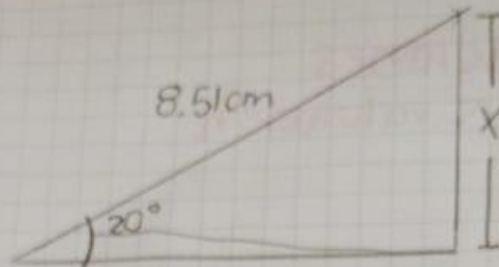
$$\frac{h}{10\text{cm}} \cos(30^\circ) = \frac{h}{10\text{cm}} \sin(30^\circ) = \frac{10\text{cm}}{\sin(30^\circ)} = 20\text{cm}$$

②



$$\frac{x}{8.51\text{cm}} \cos(20^\circ) = \frac{x}{8.51\text{cm}} \sin(20^\circ) = 7.99\text{cm}$$

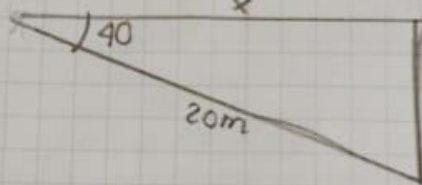
③



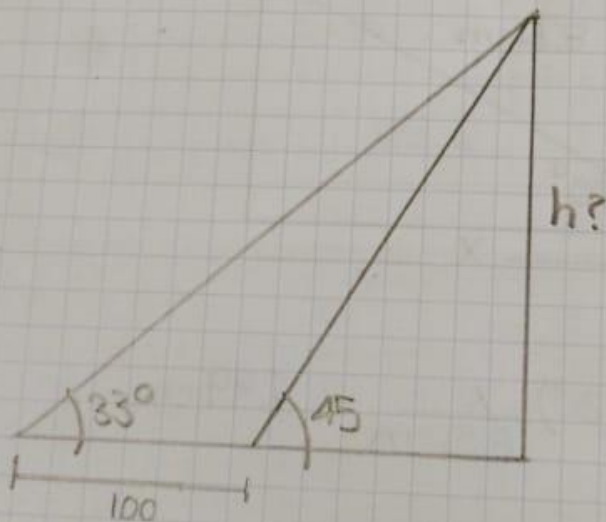
$$\frac{c.o}{h} \frac{x}{8.51cm} = 2.91cm$$
$$\cos(20)$$

④

$$\frac{c.o}{h} \cos(40) = \frac{x}{20cm} \quad 20 \times \cos(40) = 15.32m$$



⑤



$$\tan(33) \frac{100}{h}$$

$$100 \tan(33) = 64.9$$

$$64.9 \div \cos(45) \approx 91.7$$

100m