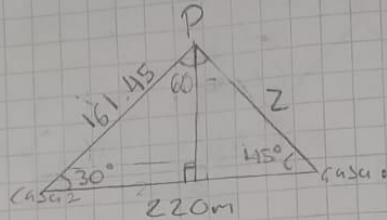


1



$$\frac{220m}{\sin 105^\circ} = \frac{x}{\sin 30^\circ}$$

$$x = \frac{h \cdot \sin 60^\circ}{\sin 30^\circ}$$

$$x = \frac{h \cdot 0.866}{1 \cdot 0.5}$$

$$x = 1.73h$$

$$\frac{200 - x}{\sin 45^\circ} = \frac{h}{\sin 45^\circ}$$

$$200 - x = \frac{h \cdot \sin 45^\circ}{\sin 45^\circ}$$

$$200 - x = h \cdot 1$$

$$200 - x = h$$

$$200 - x = x$$

$$x = 200 - h$$

$$(1), (2) \quad 200 = h = 1.73h$$

$$200 = 1.73h + h$$

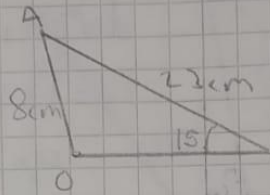
$$200 = 2.73h$$

$$h = \frac{200}{2.73}$$

$$h = 73.20m$$

Scribe

2



$$\frac{a}{\sin A} = \frac{b}{\sin B} = \frac{c}{\sin C}$$

$$O = 48,37$$

$$A = 116,63$$

$$A = 180 - 15$$

$$\sin(A) = 0,89$$

$$\frac{8}{0,26} = \frac{22}{\sin O}$$

$$\frac{a}{\sin O} = \frac{p}{\sin P}$$

$$a = \frac{p + \sin A}{\sin P} = \frac{8 + 0,89}{0,26}$$

$$\sin O = \frac{22}{20,7}$$

$$\sin - 10 = 48,37$$

$$a = \frac{7,12}{0,26} = 27,3$$

3

$d = 13.23 \text{ cm}$
 $d = 13.23 \text{ cm}$
 $\text{sen } 60 = \frac{h}{10}$
 $h = 10 \text{ sen } 60$
 $h = 8.66 \text{ cm}$
 $d = 13.23 \text{ cm}$

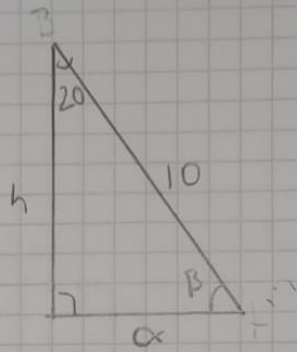
d = $\sqrt{5^2 + 10^2 - 2 \cdot 5 \cdot 10 \cdot \cos 120}$
 $d = 13.23 \text{ cm}$
 $\text{sen } 60 = \frac{h}{10}$
 $h = 10 \text{ sen } 60$
 $h = 8.66 \text{ cm}$
 $d = 13.23 \text{ cm}$

REDMI NOTE 8
AI QUAD CAMERA

4

$b^2 = 6^2 + 9^2 - 2 \cdot 6 \cdot 9 \cdot \cos 120$
 $b = \sqrt{36 + 81 + 54}$
 $b^2 = 13.08 \text{ km}$

5



$$\cos 20 = \frac{10}{h}$$

$$(10) \cdot \cos 20 = 9.39 \text{ cm}$$

$$h = 9.39$$