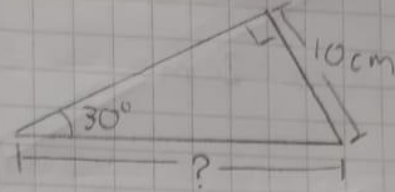


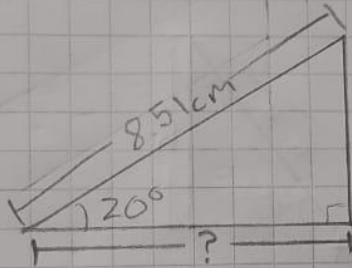
Examen

1



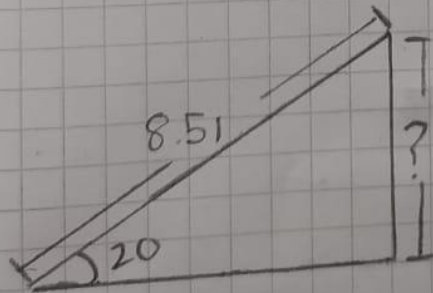
$$\text{Sen}(30^\circ) = \frac{10}{h}$$
$$(10) \div \text{Sen}(30) = 20 \quad h = 20\text{ cm}$$

2



$$\text{Cos}(20) = \frac{x}{8.51} \quad \text{c.o} = 7.99\text{ cm}$$
$$(8.51) \cdot \text{Cos}(20) = 7.99$$

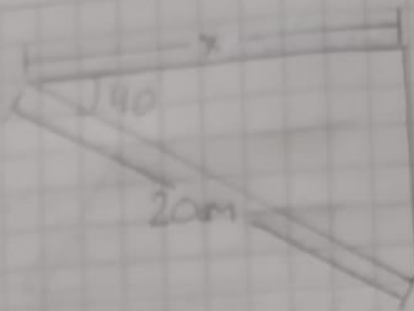
3



$$\text{Sen}(20) = \frac{?}{8.51} \quad \text{c.o} = 2.91\text{ cm}$$

$$(8.51) \cdot \text{Sen}(20) = 2.91\text{ cm}$$

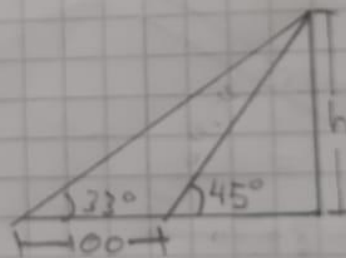
4



$$\cos(40) = \frac{x}{20m}$$

$$(20) \cdot \cos(40) = 15.32$$

5



$$\tan(33) = \frac{h}{100}$$

$$(100) \cdot \tan(33) = 153.98$$

$$\sin(45) = \frac{h}{153.98}$$

$$(153.98) \cdot \sin(45) = 108$$