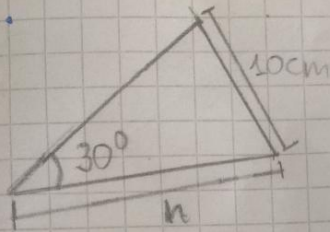


12/05/2021.

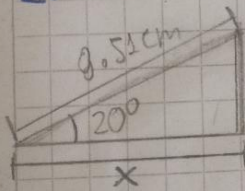
Solución Quiz

1.



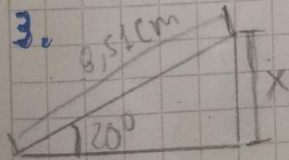
$$\begin{aligned}\text{Sen}(30^\circ) &= \frac{10\text{cm}}{n} \\ h &= \frac{10\text{cm}}{\text{Sen}(30^\circ)} \\ h &= \frac{10\text{cm}}{0.5} \\ h &= 20\text{cm}\end{aligned}$$

2.



$$\begin{aligned}h &= 8.51 \quad \text{C.O} = \cos(20^\circ) = \frac{\text{C.A}}{8.51} \\ \text{C.A} &=? \\ \text{C.A} &= 8.51 \cdot \cos(20^\circ) = 7.99 \\ \text{C.A} &= 7.99\text{cm}\end{aligned}$$

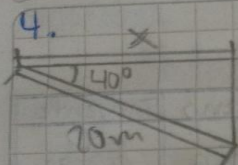
3.



$$\begin{aligned}\text{C.O} &=? \\ h &= 8.51 \\ \text{C.O} &= 8.51 \cdot \text{Sen}(20^\circ) = 2.91 \\ \text{C.O} &= 2.91\text{cm}\end{aligned}$$

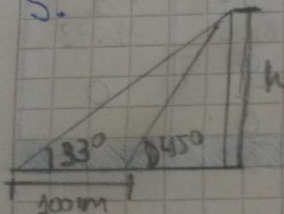
Scribe

4.



$$\begin{aligned}\text{C.A} &=? \\ H &= 20\text{m} \\ \text{C.A} &= 20\text{m} \cdot \cos(40^\circ) = 15.32\text{m}\end{aligned}$$

5.



$$\begin{aligned}\text{Tan}(45^\circ) &= \frac{h}{100\text{m}} = 120 \quad \text{Tan}(45^\circ) = 120 \\ \text{Tan}(33^\circ) &= \frac{h}{100\text{m}} = 100 \cdot \text{Tan}(33^\circ) = 64.9 \\ 120 + 64.9 &= 184.9 \\ h &= 184.9\end{aligned}$$