

8-08-21

Quiz de números mixtos

Convertir las siguientes impropias a números mixtos; gráficamente y numéricamente.

* $\frac{13}{4}$

* $\frac{14}{6}$

* $\frac{12}{9}$

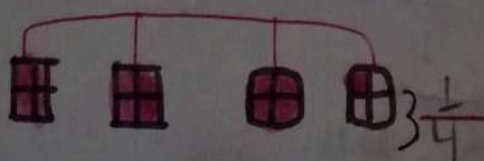
* $\frac{7}{3}$

Solución

* $\frac{13}{4}$

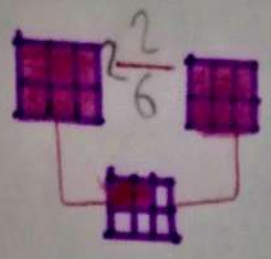
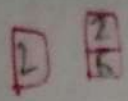
$$\begin{array}{r} 13 \overline{) 4} \\ \underline{12} \\ 2 \\ \underline{2} \\ 0 \end{array}$$

$\boxed{3}$ $\frac{1}{4}$



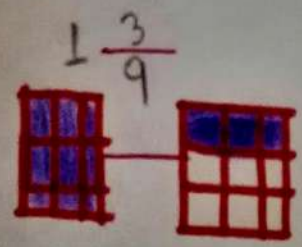
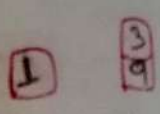
$$\frac{14}{6}$$

$$\begin{array}{r} 4 \overline{) 6} \\ 22 \end{array}$$



$$* \frac{12}{9}$$

$$\begin{array}{r} 12 \overline{) 9} \\ 31 \end{array}$$



$$* \frac{7}{3}$$

$$\begin{array}{r} 7 \overline{) 3} \\ 12 \end{array}$$

