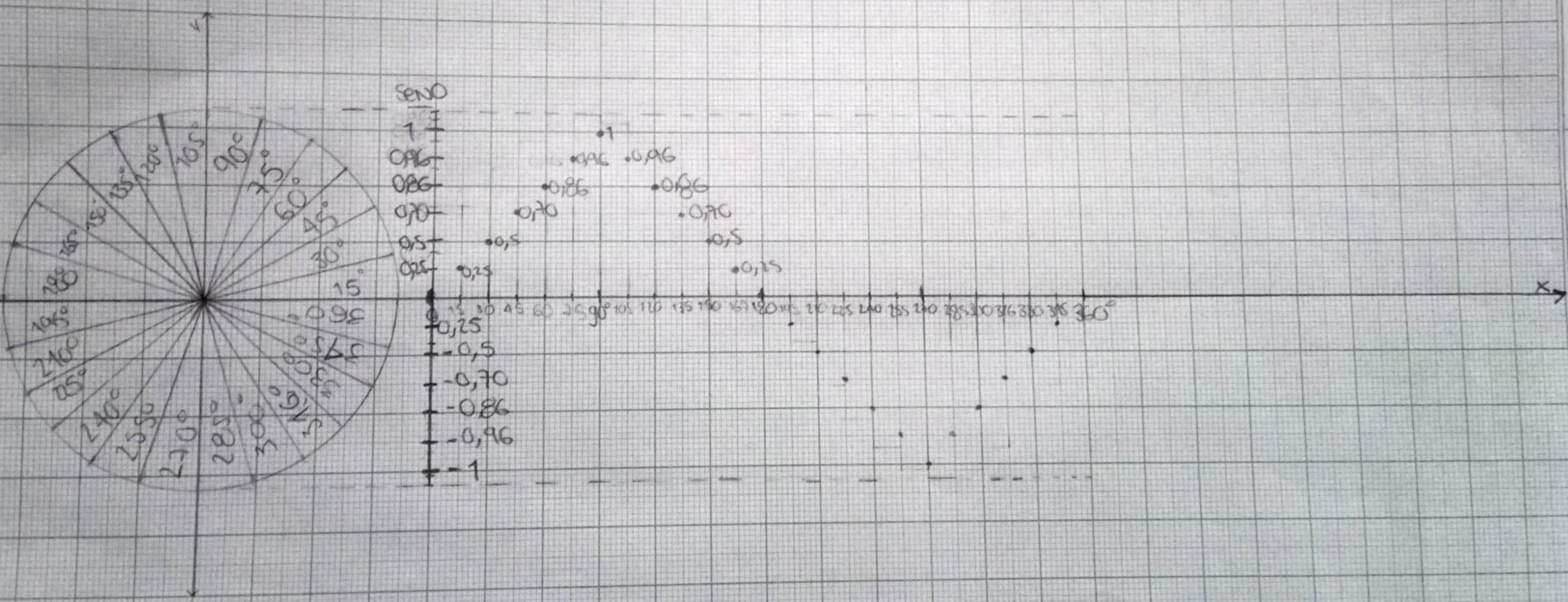
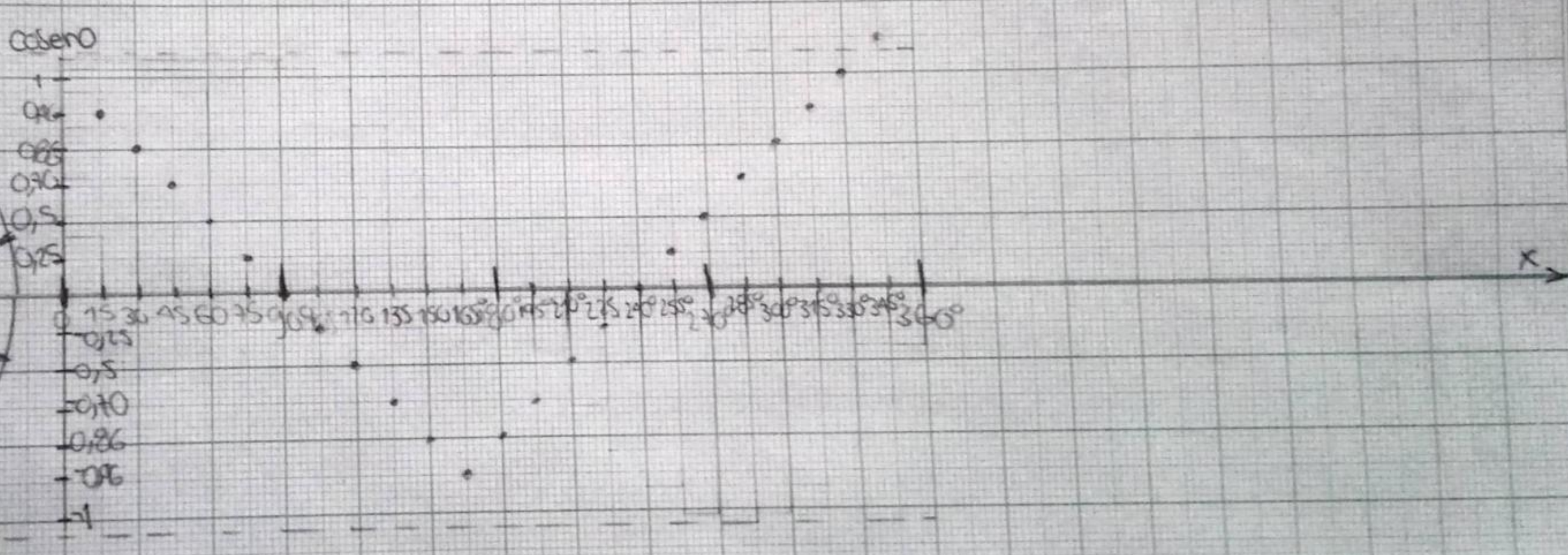
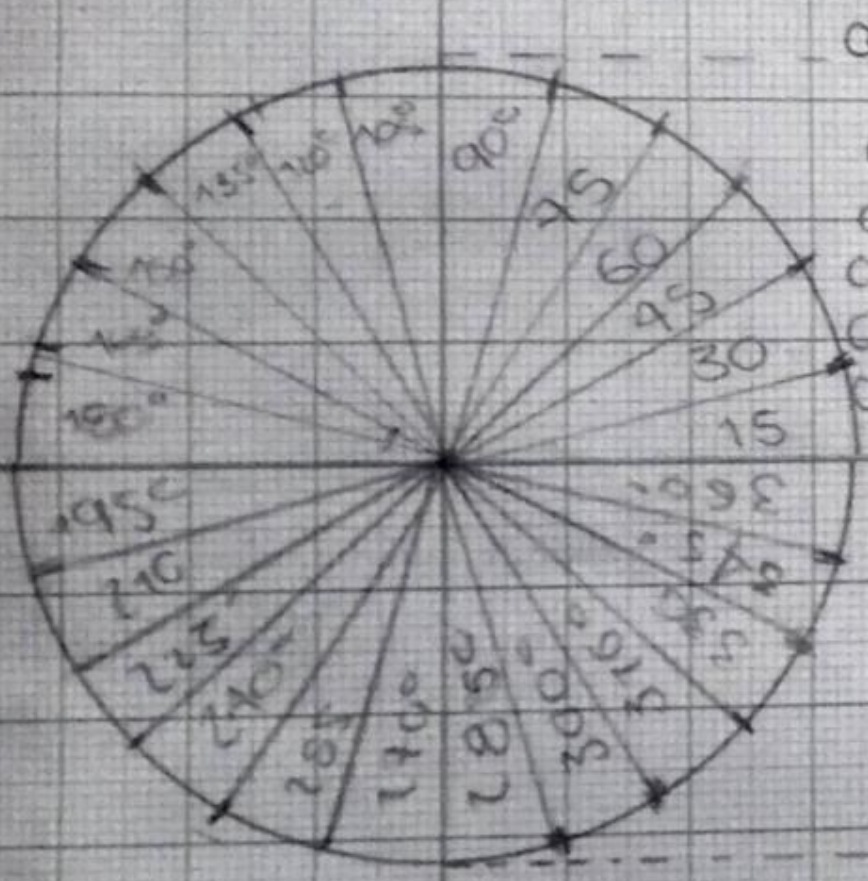


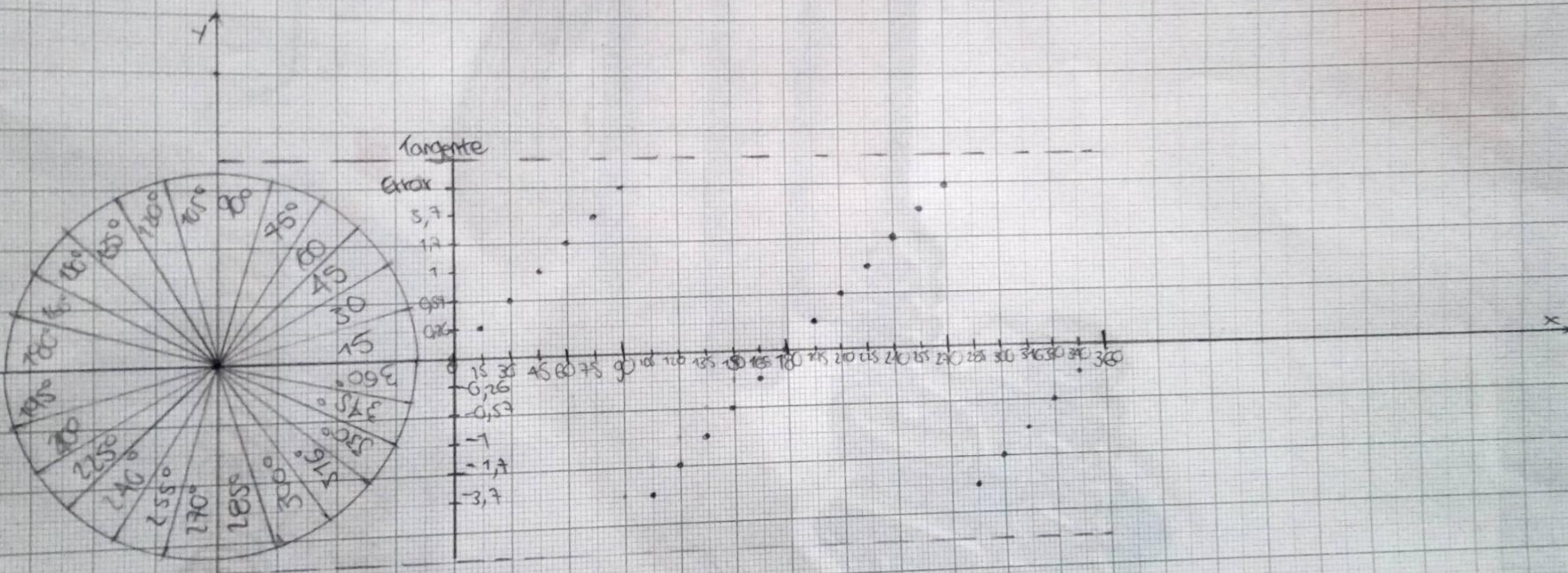
FUNCIÓN SENO



Función COSENO



FUNCION TANGENTE



PROCESO #1

$$\textcircled{1} \frac{3,5 - 1,5}{3,1 - 2,9} = \frac{2}{0,3} = 6,6 \text{ MIS}$$

$$\textcircled{2} \frac{5,5 - 3,5}{5,5 - 3,2} = \frac{2}{2,3} = 0,8 \text{ MIS}$$

$$\textcircled{3} \frac{7,5 - 5,5}{7,4 - 5,5} = \frac{2}{1,9} = 1$$

$$\textcircled{4} \frac{9,5 - 7,5}{9,2 - 7,4} = \frac{2}{1,8} = 1,1$$

PROCESO #2

$$\textcircled{1} \frac{3,5 - 1,5}{4,5 - 3,2} = \frac{2}{1,3} = 1,5$$

$$\textcircled{2} \frac{5,5 - 3,5}{7,2 - 4,5} = \frac{2}{2,7} = 0,7$$

$$\textcircled{3} \frac{7,5 - 5,5}{7,5 - 7,2} = \frac{2}{2,3} = 0,8$$