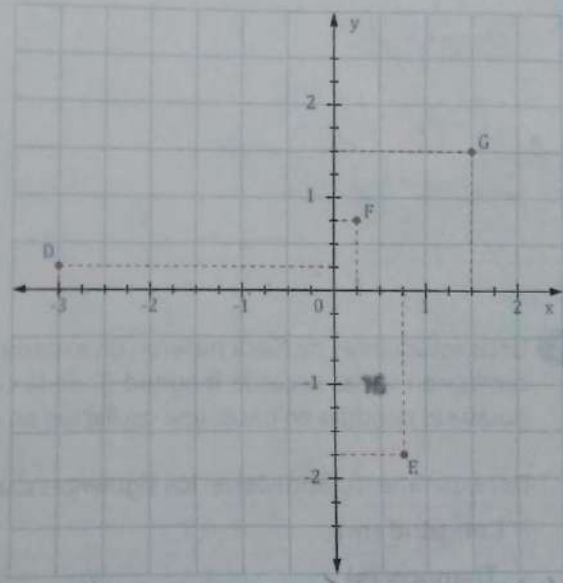
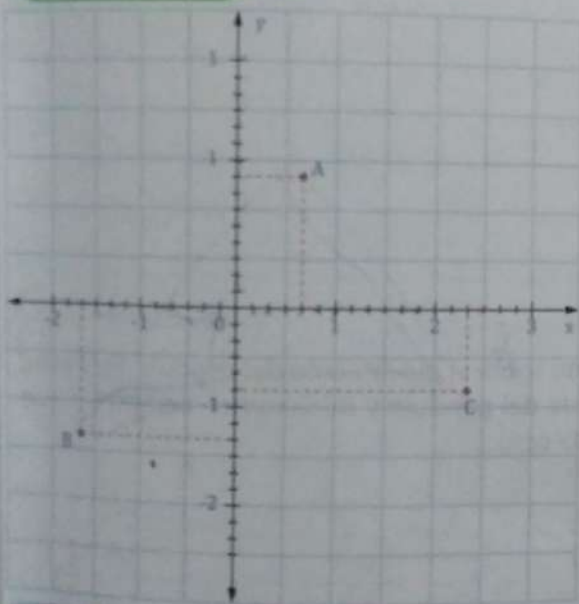




1 Indica las coordenadas racionales representadas.



$$A\left(\frac{4}{6}, \frac{1}{6}\right)$$

$$B\left(-\frac{2}{6}, -\frac{2}{6}\right)$$

$$C\left(\frac{14}{6}, \frac{5}{6}\right)$$

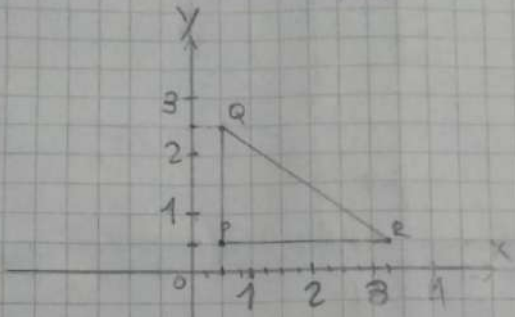
$$D\left(-3, \frac{1}{4}\right)$$

$$E\left(\frac{3}{4}, -\frac{7}{4}\right)$$

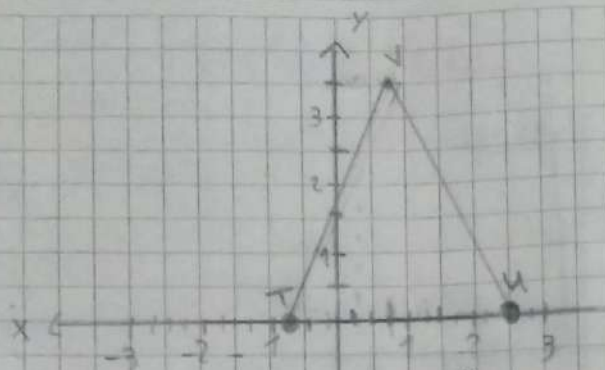
$$F\left(\frac{1}{4}, \frac{3}{4}\right)$$

$$G\left(\frac{6}{4}, \frac{6}{4}\right)$$

modulo pag 54 punto 2



R: Este triángulo es rectángulo.



R= Este triangulo es
acutángulo.

modulo, ~~seg~~ punto 3

