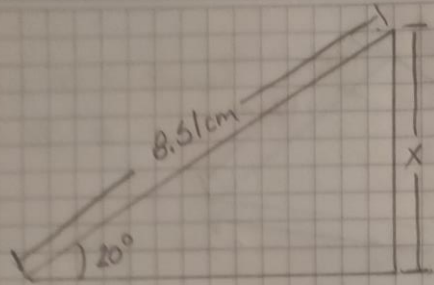


$$\tan = \frac{CO}{CO} = \frac{100}{9}$$

$$CO = \frac{100}{\tan 145^\circ} = 100 \text{ m}$$



$$\cos = x$$

$$\cos = ?$$

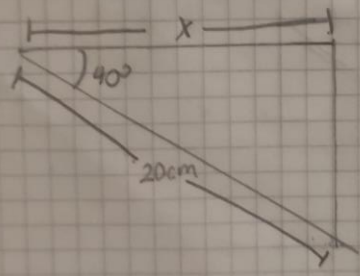
$$h = 8,51 \text{ cm}$$

$$\theta = 20^\circ$$

$$\sin(20) \frac{x}{8,51} = 2,91$$

$$8,51 \cdot \sin(20) = x$$

4

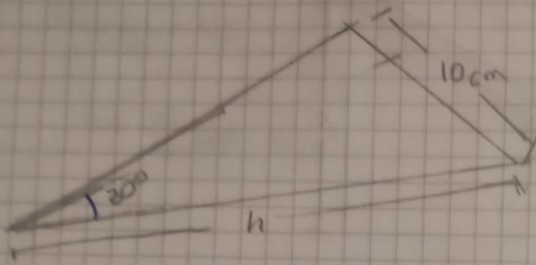


$$\cos(40) \frac{x}{20}$$

$$20 \cdot \cos(40) = x$$

$$= 15,32$$

1



$c.o = 10\text{cm}$

$c.a = ?$

$h = ?$

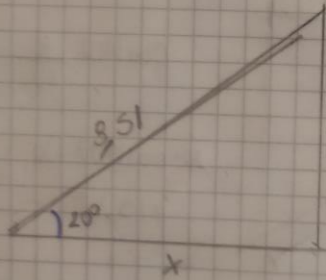
$\theta = 30^\circ$

$\text{Jen}(30) \frac{10\text{cm}}{h} = 20\text{cm}$

$h \cdot \text{Jen}(30) = 10\text{cm}$

$h = \frac{10\text{cm}}{\text{Jen } 30}$

2



$c.a = ?$

$c.o = x$

$h = 8,51$

$\theta = 20^\circ$

$\text{cos}(20) \frac{x}{8,51}$

$8,51 \cdot \text{cos}(20) = x$