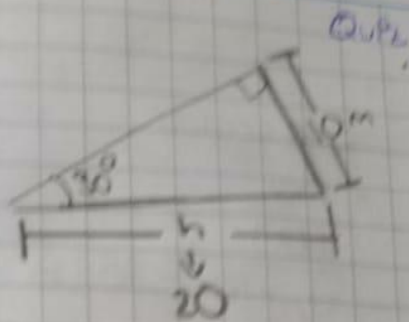


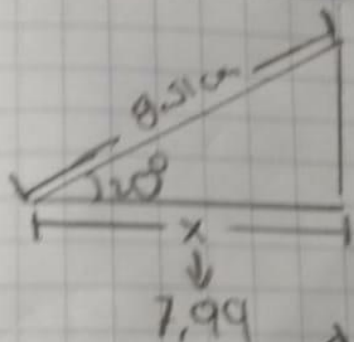
10



$$\text{Sen } \theta = \frac{10}{h} \rightarrow \text{Sen}(30^\circ) = \frac{10}{h}$$

$$\text{sen}(30^\circ) = 0,5 \rightarrow \frac{10}{0,5} = 20$$

20

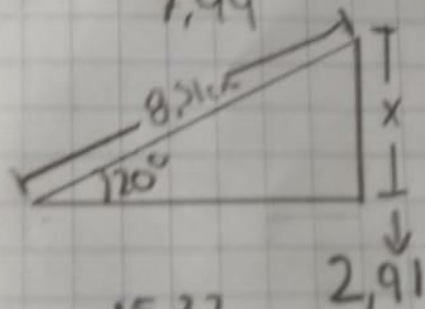


$$\text{Cos } \theta = \frac{x}{8,51} \rightarrow \text{Cos}(20^\circ) = \frac{x}{8,51}$$

$$\text{Cos}(20^\circ) = 0,934 \rightarrow \frac{0,934}{8,51}$$

$$0,934 \times 8,51 = 7,99$$

30

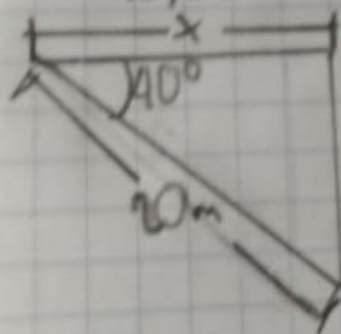


$$\text{Sen } \theta = \frac{x}{8,51} \rightarrow \text{Sen}(10^\circ) = \frac{x}{8,51}$$

$$\text{Sen}(10^\circ) = 0,342 = \frac{0,342}{8,51}$$

$$0,342 \times 8,51 = 2,91$$

40

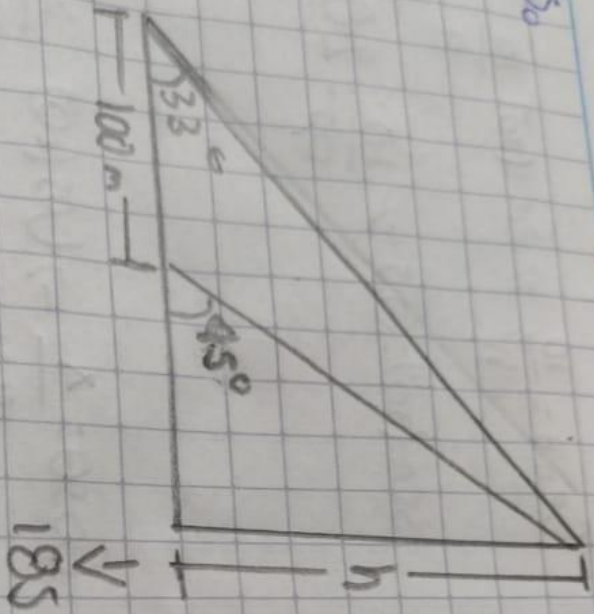


$$\text{Cos } \theta = \frac{x}{20} \rightarrow \text{Cos}(40^\circ) = \frac{x}{20}$$

$$\text{Cos}(40^\circ) = 0,766 \rightarrow \frac{x}{20} \rightarrow \frac{0,766}{20}$$

$$0,766 \times 20 = 15,32$$

30



$$\sin \alpha = 0,844$$

$$\frac{100}{0,244} = 183,8$$