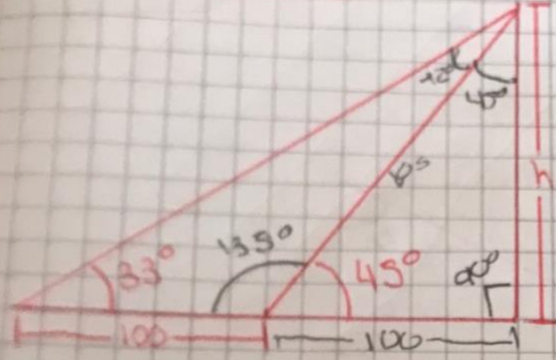


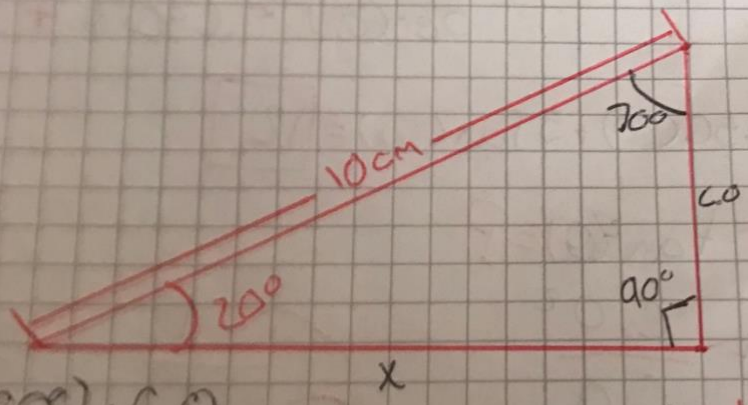
10/10/2020

Examen



$$\frac{\cos(45^\circ)}{100} = \frac{1}{100}$$
$$\frac{\cos(12^\circ)}{100} = \frac{1}{100}$$

100

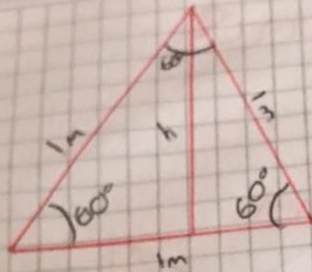


$$\cos(20^\circ) = \frac{6}{10 \text{ cm}}$$
$$10 \text{ cm} \cdot \cos(20^\circ) = 9,39$$

0,93

Norma

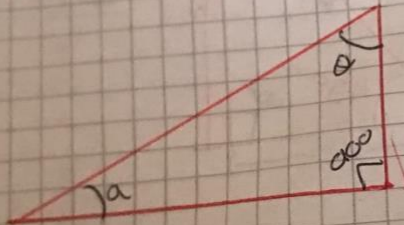
3)



~~$\cos(60^\circ)$~~
1

$\cos(30^\circ) = \frac{\sqrt{3}}{2}$
1

4)



$\text{sen}(a) \times \text{csc}(a) = 5 \text{tab}(a)$

$\text{Sen}(10) + \text{csc}(90) + 5 \text{Tan}(20) = 12$

5)

$1 + \tan^2(\theta) = ?$

$1 + \frac{c.o^2}{c.a}$

$\frac{1}{1} + \frac{c.o}{c.a}$

$\frac{1}{1} = \frac{c.o^2}{c.o}$
 $\frac{1}{c.a} = \frac{\text{Tan}^2 \theta}{c.a}$