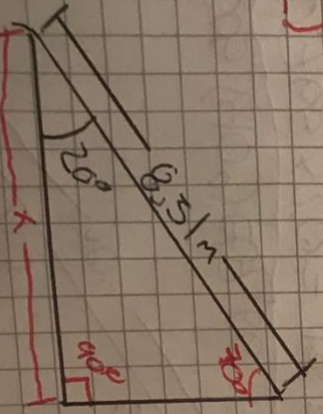


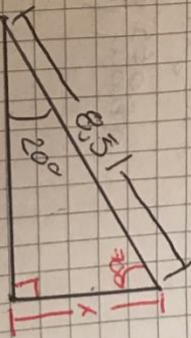
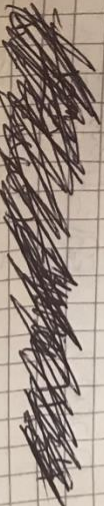
$$h = \frac{10}{\cos(66^\circ)} = 20$$



$$\sin(20^\circ) = 0.34$$

$$0.34 \times 8.51 \text{ m} = 2.9$$

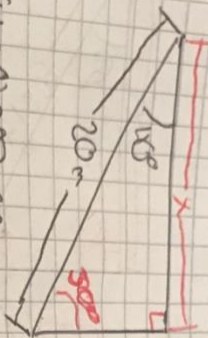
2.99
Se Aproxima



$$\sin(20^\circ) = 0.34$$

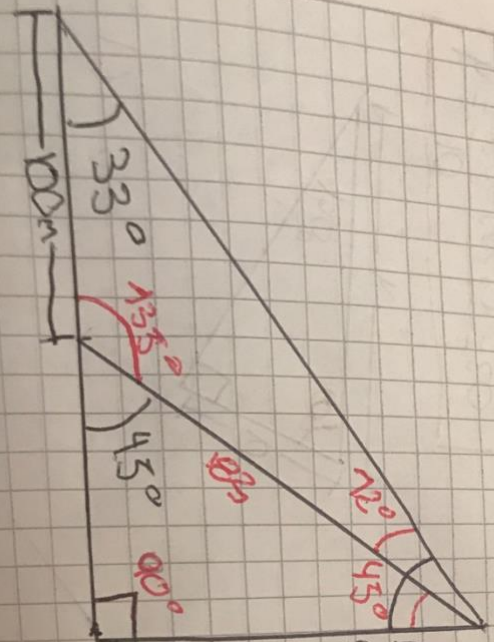
$$0.34 \times 8.51 \text{ m} = 2.9$$

2.91
Se Aproxima



$\cdot \cos(4109) \cos 5,66$
 $0,766 \times 20 = 13,32$

5)



Angulo del triángulo grande = 59°

$59^\circ - 45^\circ = 12^\circ$

$\frac{100}{\sin(33^\circ)} = 183$

$\frac{183}{\cos(45^\circ)} = 183$