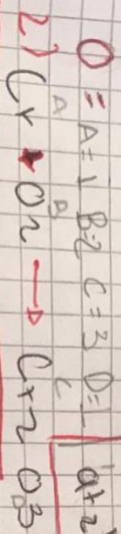
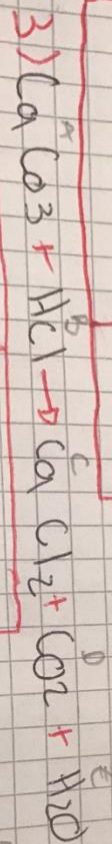


$$\begin{aligned} \text{C} &= 9 = a + 4 \\ \text{H} &= 8 = 2 \\ \text{O} &= 12 = 3 + d \end{aligned}$$

$$\begin{aligned} a &= 2 \\ b &= 1 \\ c &= 1 \\ d &= 1 \end{aligned}$$

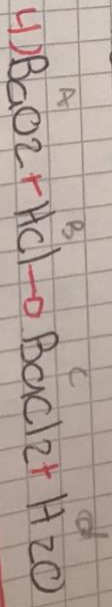


$$\begin{aligned} \text{C} &= x = 2 \\ \text{H} &= y = 2 \\ \text{O} &= 2 = 3 \end{aligned}$$



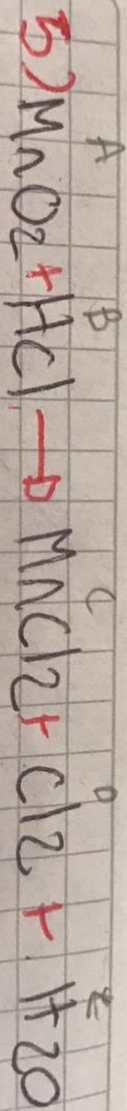
$$\begin{aligned} \text{Ca} &= 1 = a \\ \text{C} &= 1 = 2c \\ \text{O} &= 3 = 2d + e \\ \text{H} &= 1 = 2e \\ \text{Cl} &= 1 = 2c \end{aligned}$$

$$\begin{aligned} a &= 2 \\ b &= 4 \\ c &= 2 \\ d &= 2 \\ e &= 2 \end{aligned}$$



$$\begin{aligned} \text{Ba} &= 1 = a \\ \text{C} &= 1 = 2c \\ \text{O} &= 3 = 2d \\ \text{H} &= 2 = 2e \\ \text{Cl} &= 2 = 2c \end{aligned}$$

$$\begin{aligned} a &= 2 \\ b &= 4 \\ c &= 2 \\ d &= 2 \\ e &= 2 \end{aligned}$$



$$\begin{aligned} \text{Mn} & \quad B = 2c + 2d \\ \text{O} & \quad a = c \\ \text{H} & \quad 2a = e \\ & \quad B = 2c \end{aligned}$$

$$\begin{aligned} a & 2 \\ b & 8 \\ c & 2 \\ d & 2 \\ e & 4 \end{aligned}$$