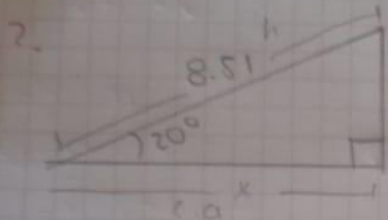
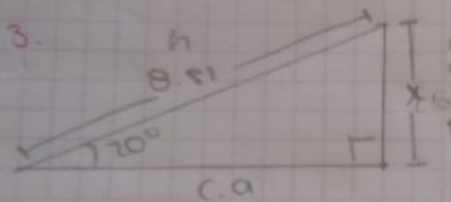


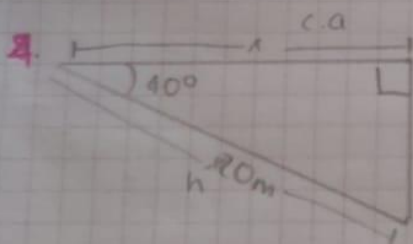
$c.a = 10$
 $c.a = h$
 $h = 20$
 $\theta = 30^\circ$
 $\sin(30) = \frac{10}{h} = \frac{10}{20} = 0.5$
 $h = \frac{10}{0.5} = 20$



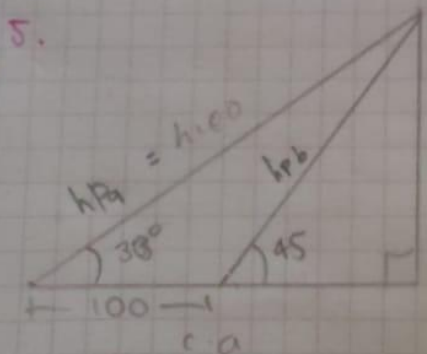
$c.o = 15.8$
 $c.a = 7.91$
 $h = 8.51$
 $\theta = 20^\circ$
 $\cos(20) = \frac{x}{15.8} = \frac{7.91}{15.8}$
 $x = 8.51 \cdot \cos(20)$
 $x = 8.51 \cdot 0.93$
 $x = 7.91$



$c.o = 2.89$
 $c.a = 8.51$
 $h = 8.51$
 $\theta = 20^\circ$
 $\sin(20) = \frac{x}{8.51} = \frac{2.89}{8.51}$
 $x = 8.51 \cdot \sin(20)$
 $x = 8.51 \cdot 0.34$
 $x = 2.89$



$c.o = 15.2$
 $c.a = 20$
 $h = 20$
 $\theta = 40^\circ$
 $\cos(40) = \frac{x}{20} = \frac{15.2}{20}$
 $x = 20 \cdot \cos(40)$
 $x = 20 \cdot 0.76$
 $x = 15.2$



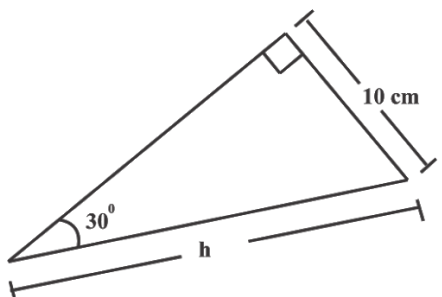
$\cos(33) = \frac{100 + x}{h}$

$\sin(45) = \frac{h}{hb}$

(13)

docs.google.com/forms/d/e/1FAIpQLScsX3xtjQgnae8ONy0h1ul62Z--u_fuwVmj_hihNRS11gsMg/viewform

1. ¿Cuál es el valor de la hipotenusa? * 1 punto



A right-angled triangle is shown. The right angle is at the top vertex. The angle at the bottom-left vertex is 30° . The leg adjacent to this angle (the vertical leg) is labeled 10 cm . The hypotenuse is labeled h .

12 cm

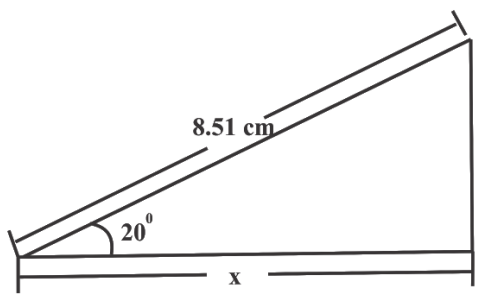
20 cm

21 cm

10 cm

docs.google.com/forms/d/e/1FAIpQLScsX3xtjQgnae8ONy0h1ul62Z--u_fuwVmj_hihNRS11gsMg/viewform

2. ¿Cuál es el valor del cateto faltante? 1 punto



A right-angled triangle is shown. The right angle is at the top-right vertex. The angle at the bottom-left vertex is 20° . The hypotenuse is labeled 8.51 cm . The horizontal leg is labeled x .

4 cm

6,4 cm

7,99 cm

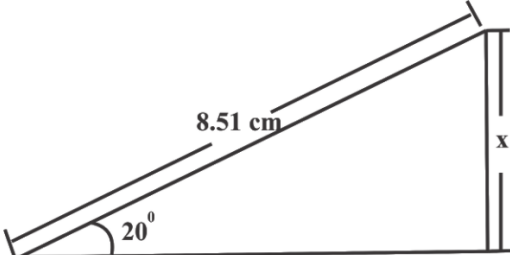
9,5 cm

Borrar la selección

docs.google.com/forms/d/e/1FAIpQLScsX3xtjQgnae8ONy0h1ul62Z--u_fuwjVm_hihNRS11gsMg/viewform

Borrar la selección

3. ¿Cuál es el valor del cateto faltante? 0 puntos



A right-angled triangle is shown. The hypotenuse is labeled 8.51 cm . The angle at the bottom-left vertex is labeled 20° . The vertical leg on the right is labeled x .

3,5 cm

2,91 cm

3 cm

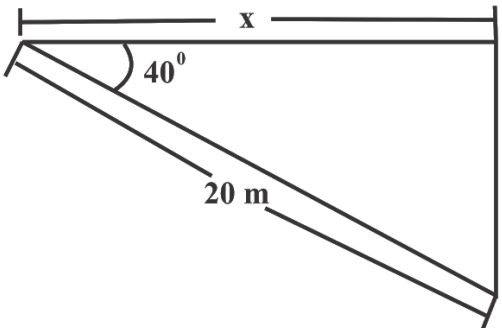
4 cm

Borrar la selección

docs.google.com/forms/d/e/1FAIpQLScsX3xtjQgnae8ONy0h1ul62Z--u_fuwjVm_hihNRS11gsMg/viewform

Borrar la selección

4. ¿Cuál es el valor del cateto faltante?



A right-angled triangle is shown. The hypotenuse is labeled 20 m . The angle at the top-left vertex is labeled 40° . The horizontal leg at the top is labeled x .

15,32 m

10 m

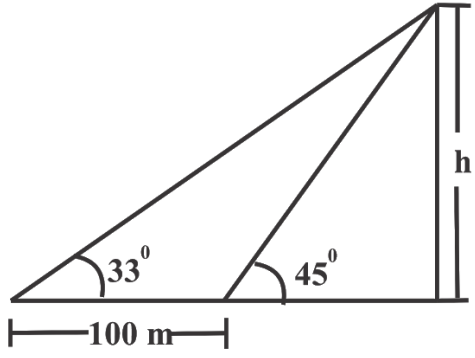
14,5 m

13,81

Borrar la selección

5. ¿Cuál es el valor de h?

0 puntos



- 100 m
- 120 m
- 185 m
- 200 m